

LENOVO G24-20 MONITOR

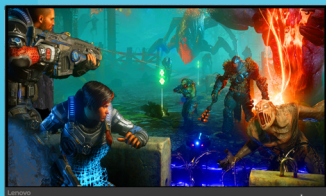
YOUR ARENA FOR EVERY VICTORY

ENTHRALLING PERFORMANCE. ENGROSSING GAMEPLAY.

As an E-sports player, your arsenal of devices must be power-packed and rigged up with superior technology. Equipped for competitive gaming, the Lenovo G24-20 takes gaming performance to the next level. A screen size of 23.8-inch, ideal for E-sports, with 3-side NearEdgeless display lets you engage in gaming distraction-free. Your skills and reflexes are backed by superfast 144 Hz refresh rate, overclock¹ to 165 Hz along with 0.5ms MPRT² and AMD FreeSync™ Premium³ technology—to ensure no target misses due to latency or screen tearing and stuttering. Nothing escapes your eye on the battlefield with In-Plane Switching panel, 99% sRGB color gamut, and 350nits brightness that offer minute details and a vivid display performance. What's more, get more control over your G24-20 monitor with exclusive Lenovo Artery software⁴ that lets you tweak display settings to further your game. Delivering an enriching experience, the Lenovo G24-20 gaming monitor significantly reduces lags and slowdowns, enabling ultra-smooth gameplay in every frame.



FEATURES OF LENOVO G24-20 MONITOR



Accurate colors with 99% sRGB color gamut



AMD FreeSync™ Premium Off

AMD FreeSync™ Premium On



Screen flicker and harmful blue light

Display with Low Blue Light technology and TÜV Rheinland Eye Comfort certification



Display Performance That Comes to Life

Fierce competitions require gamers to spot their enemies first and knock them down. The neat 23.8-inch display of the G24-20 with the dynamic FHD 1920 x 1080 resolution and In-Plane Switching panel keeps you ahead with sharp and vibrant images. Users can take advantage of the 99% sRGB color gamut, true 8-bit color, and 350nits brightness that provide vivid color. Stunning, realistic, and true-to-life images with HDR decoding reproduces the original images with precise details—offering immersive gaming and multimedia experience.

Power-packed for Enriching Gameplay

Latency could be the determining factor between winning and losing a game. A refresh rate of 144 Hz with possible overclock to 165 Hz ensures more frames per second can be displayed, resulting in faster and smoother video output. A blazingly-fast 0.5ms MPRT² eliminates streaking and ghosting. AMD FreeSync™ Premium³ technology reduces stuttering and screen tearing, so you enjoy competitive gaming and stay a step ahead.

Extended Hours of Entertainment

The G24-20 comes with a futuristic yet user-oriented design that is made for gaming. It stands tall and sturdy on the Wings of Victory themed Vector V base stand that adds a dash of style while offering a wide range of lift and height adjustments for ergonomic comfort. This display comes with Low Blue Light technology and is certified by TÜV Rheinland Eye Comfort, ensuring minimal eye strain whether you watch a video, browse web pages, indulge in entertainment, or work or learn from home. Lenovo Artery software⁴ offers excellent user experience with more advanced tools and gaming assistant functions.

Lenovo G24-20 Monitor

DISPLAY

Panel Size

23.8-inch

Screen Dimensions

535.0 mm x 313.0 mm

Panel Type

3-side NearEdgeless
In-Plane Switching

Active Area

527.0 mm x 296.5 mm

Backlight

WLED

Aspect Ratio

16:9

Resolution

1920 x 1080

Pixel Pitch

0.2745 mm x 0.2745 mm

Dot/Pixel Per Inch (DPI/PPI)

93

Viewing Angle (H x V @ CR 10:1)

178° / 178°

Response Time

1ms (LV1), 2ms (LV2), 3ms (LV3),
4ms (LV4), 5ms (off), 0.5ms (MPRT)²

Refresh Rate

144 Hz,
165 Hz (overclock)

Brightness (typical)

350 cd/m²

Contrast Ratio (typical)

1000:1

Dynamic Contrast Ratio (typical)

3M:1

Color Gamut

99% sRGB

Color Support (typical)

16.7 Million

Color Depth

8-bit

HDR Decoding

Yes

Anti-glare

Yes

CONNECTIVITY

Video Signal

2 x HDMI 2.0
1 x DP 1.4

Audio Signal

1 x Audio Out (3.5mm)

SPECIAL FEATURES

Software

Lenovo Artery⁴
(Lenovo Display Control Center)
- Game Mode
- Aim Point
- Timer
- Show Frame Rate
- Desktop Partition
- Task Scheduler & Reminder
- Multi-screen Settings Sync
- Sound Device

Sync Technology

AMD FreeSync™ Premium³

POWER

Power Consumption

25W / 38W

Power Consumption Sleep/Off Mode

< 0.5W

Power Consumption Switch-Off Mode

< 0.3W

Power Supply

Internal

Voltage Required

AC 100 to 240 V (50-60 Hz)

MECHANICAL

Tilt Angle (front/back)

-5° / 22°

Lift (Max range)

130 mm

VESA Mount Capability

Yes (100 x 100 mm)

Kensington Lock Slot

Yes

Cable Management

Yes

Bezel Color

Raven black

Bezel Width(side)

2.0 mm

Bezel Width(top/bottom)

2.0 mm / 18.9 mm

DIMENSION

Size Packed (D x H x W, mm/inch)

159.0 x 464.0 x 780.0 mm
6.26 x 18.27 x 30.71 inches

Size Unpacked w/stand (D x H x W) (mm/inch) (Lowest position)

234.8 x 364.2 x 539.8 mm
9.24 x 14.34 x 21.25 inches

Size Unpacked w/stand (D x H x W) (mm/inch) (Highest position)

234.8 x 494.2 x 539.8 mm
9.24 x 19.46 x 21.25 inches

Size Unpacked w/o stand (Head Only) (D x H x W)(mm/inch)

52.5 x 323.2 x 539.8 mm
2.07 x 12.72 x 21.25 inches

Weight Packed (kg/lb)

7.3 kg / 16.1 lbs.

Weight Unpacked (kg/lb)

5.3 kg / 11.6 lbs.

Weight (Monitor Head Only) (kg/lb)

3.3 kg / 7.3 lbs.

WHAT'S IN THE BOX

Monitor with stand
1 x Power cable (1.8m, optional)
1 x DP cable (1.8m)
Quick setup guide
Warranty booklet

CERTIFICATION

CCC

Yes

RoHS (EU 2002/95/EC)

Yes

Windows Certification

Windows 7, Windows 10

China Energy Efficiency

Tier 2

TÜV Rheinland Eye Comfort

Yes



¹Overclocking may cause screen flickering. Avoid enabling it for longer durations

²Moving Picture Response Time (MPRT) improves the response time and reduces motion blur in the monitor. Enabling MPRT will disable AMD FreeSync™, and you may notice a negligible flicker

³FreeSync™ Premium only can work with AMD Radeon series graphic card

⁴This software can only be used with Windows 10

Depending on many factors such as the processing capability of peripheral devices, file attributes, and other factors related to system configuration and operating environments, the actual transfer rate using the various USB connectors on this device will vary and is typically slower than the data rates as defined by the respective USB specifications: - 5 Gbit/s for USB 3.1 Gen1; 10 Gbit/s for USB 3.1 Gen2 & 20 Gbit/s for USB 3.2.

© 2021 Lenovo. All rights reserved. These products are available while supplies last. Prices shown are subject to change without notice. For any questions concerning price, please contact your Lenovo Account Executive. Lenovo is not responsible for photographic or typographic errors. Warranty: For a copy of applicable warranties, write to: Warranty Information, 500 Park Offices Drive, RTP, NC 27709, Attn: Dept. ZPYA/B600. Lenovo makes no representation or warranty regarding third-party products or services. Trademarks: Lenovo, the Lenovo logo, Rescue and Recovery, ThinkPad, ThinkCentre, ThinkStation, ThinkVantage, and ThinkVision are trademarks or registered trademarks of Lenovo. Microsoft, Windows, and Vista are registered trademarks of Microsoft Corporation. Other company, product, and service names may be trademarks or service marks of others.

Specifications may vary depending upon region.