

PHILIPS

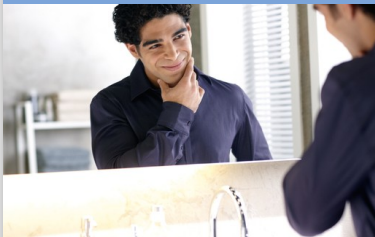
PowerTouch

Dry electric shaver

DualPrecision Flexing heads

50 min cordless use/1h charge

Pop-up trimmer



PT860/16



DualPrecision

Catches more hairs

PowerTouch adds power to your morning. Now with more minutes per charge, fully washable heads and DualPrecision blades - that give you a cleaner shave. With PowerTouch you'll always fly through your morning routine.

A comfortable and close end result

- DualPrecision heads shave long hairs and short stubble
- Flex & Float adjusts to face and neck curves
- Super Lift & Cut blades raise hairs to cut closer
- Perfect for trimming your sideburns and moustache

The fastest way through your morning routine

- 50+ shaving minutes, 1-hour charge
- Can be used corded and cordless
- Simply rinses clean
- LED Display



Highlights

DualPrecision blades



DualPrecision blades comfortably shave both long hairs and short stubble. 1. Slots cut long hairs. 2. Holes cut stubble.

Flex & Float



Automatically adjusts to every curve of your face and neck for a smoother shave.

Super Lift & Cut action



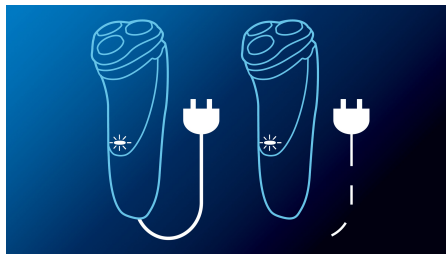
The first blade raises each hair while the second blade comfortably cuts below skin level, for really smooth results.

Pop-up trimmer



Complete your look by using the pop-up trimmer. Perfect for maintaining a moustache and trimming sideburns.

Efficient power System



Can be used corded and cordless

50+ shaving minutes



An energy-efficient, powerful and long-lasting lithium-ion battery gives you more shaves per charge. Charge it for an hour, and you'll have 50+ minutes of shaving time - that's around 17 shaves. Charge it for 3 minutes and you'll have enough power for one shave.

Fully washable shaver



Simply pop the heads open, and rinse thoroughly under the tap.

LED Display



Indicates: Battery full, Battery low, Charging, Replace shaving heads, Quick charge



asimpleswitch.com

Philips Green Logo

Philips Green Products can reduce costs, energy consumption and CO2 emissions. How? They offer a significant environmental improvement in one or more of the Philips Green Focal Areas – Energy efficiency, Packaging, Hazardous substances, Weight, Recycling and disposal and Lifetime reliability.

Specifications

Shaving Performance

Shaving system: Super Lift&Cut, DualPrecision heads

Contour-following: Flex & Float System

Styling: Integrated pop up trimmer

Ease of use

Display: 2 LED indicator

Cleaning: Fully washable, QuickRinse hair chamber

Shaving time: 50+ minutes, up to 17 shaves

Charging time: 1 hour, 3 min quick charge for 1 shave

Display indicates: Battery full, Battery low, Charging, Replace shaving heads, Quick charge

Operation: Corded and cordless, Rechargeable battery

Design

Handle: Ribbed rubber grip, Anti-slip, Ergonomic Easy Grip

Accessories

Maintenance: Cleaning brush, Protective cap

Service

Replacement head: HQ8 has been replaced by SH50

Guarantee: 2-year guarantee

Replacement heads: Replace every 2 yrs with HQ8

Power

Automatic voltage: 100–240 V

Battery type: Lithium-ion

Max power consumption: 5.4 W

Stand-by power: < 0.25 W

