

Dismantling information

The document is intended for use by end-of-life recyclers or treatment facilities. It provides the basic instructions for the disassembly of LG products to remove components and materials requiring selective treatment.

Product Identification

Type of Product	Monitor TV
Model name	28TN525S-PZ

Displays must be stored in accordance with the requirements stipulated in Appendix VIII (1) or (2) of Directive 2012/19/EU and must, amongst other things, be stored in a weatherproof manner. Containers with covers must be used when storing and transporting the Displays.

Contents

- 1. Materials and components for Selective Treatment**
- 2. Tools Required**
- 3. Product Disassembly Process**
- 4. Disassembly of External enclosure**




1. Materials and components for Selective Treatment

Displays may contain hazardous substances like Pb and BFRs which are covered by exemptions under the RoHS directive. However, the majority is present in the PCB assembly. In order to reduce emissions as much as possible, a complete disposal of the old appliance is required. This treatment may only be performed in authorized handling plants.

Materials and components	Notes	Included
Printed Circuit Boards (PCB) or Printed Circuit Assemblies (PCA)	With a surface greater than 10 square cm	○
Batteries	For Remote control	○
	Internal batteries	-
Mercury containing components	display backlights	-
Liquid Crystal Displays (LCD) with a surface greater than 100 square cm	Includes background illuminated displays with gas discharge lamps	○
Capacitors / condensers (Containing PCB / PCT)		-
Electrolytic Capacitors / Condensers measuring greater than 2.5 cm in diameter or height		○
External electric cables cords	Power cord	○
	Signal cable	-
Gas Discharge Lamps		-
Plastics containing Brominated Flame Retardants		-
Components and waste containing asbestos		-
Components, parts and materials containing refractory ceramic fibers		-
Components, parts and materials containing radioactive substances		-

2. Tools Required

List the type that would typically be used to disassemble the product to a point where components and materials requiring selective treatment can be removed.

Tool Description	Tool information
Screw driver	
Nipper	
Plastic Hera Jig	

3. Product Disassembly Process

1. Batteries

Batteries can easily be removed from the remote control once the back cover of the remote control has been removed.



3. Product Disassembly Process

2. PCBs and LCD Module

The back cover of the display can easily be removed by hand, screw driver and Hera Jig.



Remove 2 x screws



(Step: Up -> L/R -> Bottom)

(Tool set up : Plastic scrapper JIG)



Turn it upside down and remove the back cover by pressing antenna jack.

PCB can removed with hand and screw driver.



LCD module(together with their casing) is only left after all other parts like electronic units and casing have been removed.



3. Product Disassembly Process

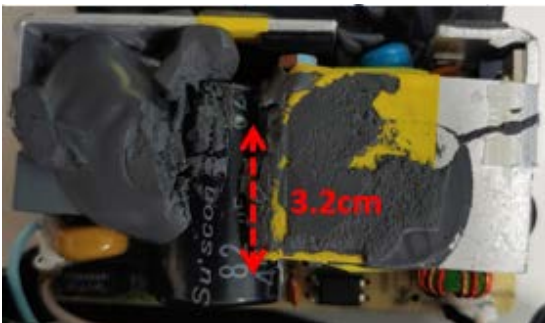
3. Power cord and signal cables

A Power cord plugged into the back of the display can easily be removed by hand.



4. Capacitors > 25 mm

Capacitors > 25 mm are located in the power supply units and can be removed by nipper



4. Disassembly of External enclosure

Remove 2 x screws to disassemble the stand.



Remove 2 x screws to disassemble the back cover.



Disassemble cabinet and back cover.



(Step: Up -> L/R -> Bottom)
(Tool set up : Plastic scrapper JIG)



Turn it upside down and remove the back cover by pressing antenna jack.

4. Disassembly of External enclosure

Disassemble 4 x Cables and Remove 3 x screws.



Disassemble 1 x Cable and Remove 3 x screws to remove the main PCB.

LCD Module

