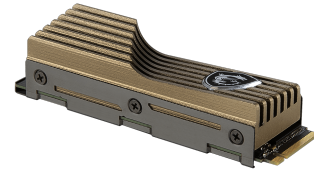




msi

STORAGE

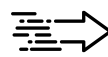
SPATIUM M480 PCIe 4.0 NVMe M.2 HS



SPECIFICATIONS

Model Name	SPATIUM M480 PCIe 4.0 NVMe M.2 HS		
Capacity	500GB	1TB	2TB
Controller	PHISON E18		
Flash Memory	3D NAND		
DRAM Cache	512MB DDR4	1GB DDR4	2GB DDR4
Form Factor	M.2 2280		
Interface	PCIe Gen4x4, NVMe 1.4		
Compatibility	PCIe Gen4 / Gen3 / Gen2 / Gen1		
Dimensions	80.00mm (L) x 22.00mm (W) x 2.15mm (H) (w/o heatsink)		
	80.40mm (L) x 23.00mm (W) x 20.40mm (H) (w/ heatsink)		
Sequential Read up to (MB/s)	6500	7000	7000
Sequential Write up to (MB/s)	2850	5500	6800
Random Read 4KB up to (IOPS)	170,000	350,000	650,000
Random Write 4KB up to (IOPS)	600,000	700,000	700,000
Maximum Operating Power (W)	6.0	6.6	8.2
Idle Power PS3 (mW)	10	14	22
Low Power L1.2 (mW)	3		
Operating Temperatures	0°C - 70°C		
Storage Temperatures	-40°C - 85°C		
Terabytes Written (TBW)	350	700	1400
Mean Time Between Failure (MTBF)	Up to 1,600,000 Hours		
Limited Warranty	5 Years, or the coverage for the maximum TBW as stated, whichever comes first.		
Advanced Features	TRIM (Performance Optimization, OS support required) SMART (Self-Monitoring, Analysis and Reporting Technology) LDPC (Low Density Parity Check) ECC Algorithm End to End Data Path Protection APST (Autonomous Power State Transition) AES256/TCG OPAL2.0/Pyrite (Encryption, Data Security)		

FEATURES



Blazing Speeds

Optimized for the PCIe Gen4 interface.



3D NAND Flash

3D NAND Flash technology brings dense storage in a compact design and allows storage capacities up to 2TB.



Security & Reliability

Built-in data security and error-correction capabilities extend the longevity of the NAND flash storage.



5 Years Warranty

MSI stands by the quality and reliability of their SSD's with a 5 year limited warranty.