

PERFORMANCE

Processor

Qualcomm® Snapdragon™ 750G (8C, 2x A77 @2.2GHz + 6x A55 @1.8GHz)

Graphics

Integrated Qualcomm Adreno™ 619 GPU

Chipset

Qualcomm SoC Platform

Memory

6GB Soldered LPDDR4x (uMCP, DRAM)

Storage

128GB UFS 2.1 (uMCP)

Expandable Memory

microSD Card (up to 512GB, FAT32; 1TB, exFAT)

Card Reader

Nano-SIM & microSD Card Slot

Storage Support

- 128GB uMCP (UFS-Based MCP, UFS 2.1)
- microSD card, supports FAT32 up to 512GB, exFAT up to 1TB

Speakers

4 side JBL® speakers, 1W x4, Lenovo® Premium Audio (LPA) Solution design, optimized with Dolby® Atmos®

Microphone

2x, Array

Camera

Front 8.0MP, ToF Sensor / Rear 13.0MP

VoiceCall^[1]

Voice Call

Sensors

- Accelerometer (G) sensor
- Ambient light sensor (ALS)
- Gyroscope sensor
- Hall sensor
- ToF proximity sensor

Vibration Motor

Eccentric Rotating Mass (ERM)

Battery

Integrated 7500mAh (Min.) / 7700mAh (Typ.)

Max Battery Life^[2]

Standby: 4.7 wks

Online video playback: 12 hr

Talking: 15 hr

Web browsing: 14.2 hr

Music playback: 15 hr

Charging Time^[3]

Around 3 hr to fully charged

Power Adapter

10V / 2A

DESIGN

Display^[4]

11" 2K (2000x1200) IPS 400nits Anti-fingerprint, Dolby Vision™, Touch

Touchscreen

10-point Multi-touch

Case Material

PMMA

Pen^[5]

Pen Upgradable (Purchase Separately)

Dust and Water Resistant

IP52

Dimensions (WxDxH)^[6]

258.4 x 7.9 x 163 mm (10.17 x 0.31 x 6.41 inches)

Weight^[7]

Around 520 g (1.14 lbs)

Case Color

Storm Grey

SOFTWARE

Operating System^[8]

Android™ 11 or Later

CONNECTIVITY

WLAN + Bluetooth®

11ac 2x2 + BT5.1

WWAN

5G Sub-6 GHz

Location Services

GPS + GLONASS + A-GPS

Standard Ports

- 1x USB-C® 3.2 Gen 1 (support data transfer, Power Delivery 3.0 and DisplayPort™ 1.4)
- 1x Nano-SIM + microSD card slot
- 1x Pogo pin connector (4-point)

SERVICE

Base Warranty

1-year, Courier with 1-year Battery

ACCESSORIES

Bundled Accessories

None

CERTIFICATIONS

Green Certifications

RoHS compliant

Other Certifications

TÜV Rheinland® Low Blue Light (Software Solution)

MODEL

Product : Lenovo® TB-J607Z

TopSeller : Yes

Announce Date : 2021-11-02

EAN / UPC / JAN : 195890753560



Product image is a sample, it may not match the real color of this model

Note:

[1] Use of Voice call requires cellular data plan. Voice call functionality details may vary based on local operator network, data and messaging services. Please contact your carriers for details.

[2] All battery life claims are approximate and based on internal testing under optimal laboratory and network conditions. Actual battery performance will vary depending on numerous factors including product configuration and usage, software, operating conditions, wireless functionality, power management settings, screen brightness and other factors. The maximum capacity of the battery will naturally decrease with time and usage.

[3] Charging data claim is approximate and based on internal testing under optimal laboratory. Actual result may vary owing to differences in product configuration, usage, software, operating conditions and other factors.

[4] IPS (in-plane switching) technology may refer to IPS, PLS, ADS, AHVA, AAS.

[5] For details upon pen compatibility, please check the file "Lenovo Android Tablet - Option Compatibility Matrix" from

<https://support.lenovo.com/solutions/accs-guide>.

[6] The system dimensions may vary depending on configurations.

[7] The system weight is approximate and based on results in.....

• Lenovo reserves the right to change specifications without notice.

To see more note information, please link to

<https://psref.lenovo.com/Detail/1644?M=ZA9M0005SE>

Premium Care - Advanced Support from Real People. Real Fast.



REAL PERSON

Choose how you want to reach us – through phone, chat, or email – our expert technicians will take care of your device issues.



REAL FAST

Highly trained technicians will provide you real-time solutions, whatever the issue, on your first contact. If the issue can't be solved remotely, our team will schedule a repair via depot / carry-in support to resolve your issue.



HASSLE FREE

'Getting started' and 'how-to' assistance for hardware and software. Easy solutions that are simple to reach – that's how Premium Care delivers you the ideal support experience.

Accidental Damage Protection One - Protection for your Tablet from the unexpected.

Avoid the hassles of unexpected damage & repair costs. With coverage for drops, spills, electric surges, and broken LCD screens, accidental damage protection makes it easy to repair to your Tablets, permitting a single repair during the coverage period.

Base Warranty - Included with the system you purchase with default 1-year coverage window.

Lenovo Warranty Extensions & Upgrades (up to 3 years duration)

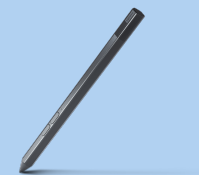
- Gain complete peace of mind by extending your base warranty to up to 3 years and minimize unexpected repair costs.

- Pick up & return courier / Depot support
- Replaceable unit service*

*Applicable in some regions only. Please check with your local services team for more details.

Lenovo may not offer the products, services or features discussed in this document in all regions. Lenovo may withdraw an offering at any time. Consult your local representative for information on offerings available in your area. Lenovo reserves the right to change specifications or other product information without notice. Lenovo is not responsible for photographic or typographical errors. Lenovo provides this publication "as is" without warranty of any kind, either express or implied, including the implied warranties of merchantability or fitness for a particular purpose.

Recommended Accessories



Lenovo Precision Pen 2(US)

ZG38C03380

With 4,096 levels of pressure and tilt detection, the Lenovo Precision Pen 2 affords users the highest level of precision and control as they sketch or just take notes. With up to 100 hours usage*, write or draw all d...



Lenovo Tab Pen Plus

ZG38C05194

With 4,096 levels of pressure and tilt detection, sketch, draw or just take notes with the highest degree of precision, responsiveness and control yet with the new Lenovo Tab Pen Plus, featuring ultra-low-latency, hig...

For a full list of accessories and services, please visit:
<https://smartfind.Lenovo.com>

Lenovo

PSREF
Product Specifications
Reference