

## PERFORMANCE

### Processor

AMD Ryzen™ 5 5600H (6C / 12T, 3.3 / 4.2GHz, 3MB L2 / 16MB L3)

### Graphics

NVIDIA® GeForce GTX 1650 4GB GDDR6

### Chipset

AMD SoC Platform

### Memory

16GB Soldered DDR4-3200

### Memory Slots

Memory soldered to systemboard, no slots, dual-channel

### Max Memory

16GB soldered memory, not upgradable

### Storage

1TB SSD M.2 2280 PCIe® 3.0x4 NVMe®

### Storage Support

One drive, up to 512GB M.2 2242 SSD or 1TB M.2 2280 SSD

### Card Reader

4-in-1 Card Reader

### Optical

None

### Audio Chip

High Definition (HD) Audio, Realtek® ALC3287 codec

### Speakers

Stereo speakers, 2W x2, optimized with Dolby® Atmos®

### Camera

ToF, HD 720p & IR

### Microphone

2x, Array

### Battery

Integrated 75Wh

### Max Battery Life

MobileMark® 2018@200nits: 10 hr (discrete graphics model)

### Power Adapter

135W Slim Tip (3-pin)

## DESIGN

### Display

16" 2.5K WQXGA (2560x1600) IPS 350nits Anti-glare, 120Hz, 100% sRGB, Low Blue Light

### Touchscreen

None

### Keyboard

Backlit, English

### Case Color

Storm Grey

### Surface Treatment

Aluminum Stamping (Anodized)

### Case Material

Aluminium (Top), Aluminium (Bottom)

### Dimensions (WxDxH)

356 x 251 x 16.9-18.4 mm (14.02 x 9.88 x 0.67-0.72 inches)

### Weight

Around 1.9 kg (4.19 lbs)

## SOFTWARE

### Operating System

Windows® 11 Home 64, Polish

### Bundled Software

Office Trial

## CONNECTIVITY

### Ethernet

None

### WLAN + Bluetooth®

Wi-Fi® 6 11ax, 2x2 + BT5.1

### Standard Ports

- 1x USB 3.2 Gen 1
- 1x USB 3.2 Gen 1 (Always On)
- 1x USB-C® 3.2 Gen 2 (support data transfer, Power Delivery 3.0, and DisplayPort™ 1.4)
- 1x HDMI® 1.4b
- 1x Card reader
- 1x Headphone / microphone combo jack (3.5mm)

### Optional Ports (configured)

1x Power connector (model with discrete graphics)

## SECURITY & PRIVACY

### Security Chip

Firmware TPM 2.0

### Fingerprint Reader

None

### Other Security

IR camera for Windows Hello

## SERVICE

### Base Warranty

2-year, Depot

### Included Upgrade

None

## CERTIFICATIONS

### Green Certifications

- ENERGY STAR® 8.0
- ErP Lot 3
- RoHS compliant

### Other Certifications

- TÜV Rheinland® Eyesafe® Display
- TÜV Rheinland Low Blue Light (Hardware Solution)

## MODEL

<b>TopSeller</b>	: Yes	<b>Announce Date</b>	: 2021-10-05
<b>EAN / UPC / JAN</b>	: 196118587479	<b>End of Support</b>	: 2027-05-05



## Premium Care - Advanced Support from Real People. Real Fast.



### REAL PERSON

Choose how you want to reach us - through the phone, chat or email - our expert technicians will take care of you.



### REAL FAST

Highly trained technicians will provide you real-time solutions, whatever the issue, on your first contact. If needed, our team will schedule an onsite visit for the next business day.



### HASSLE FREE

'Getting started' and 'how-to' assistance for hardware and software. Easy solutions that are simple to reach - that's how Premium Care delivers you the ideal support experience.



### PC HEALTH CHECK

Free annual PC Health Check that allows our experts to spot issues before you do so they can resolve them quickly and help you avoid PC problems.

## Accidental Damage Protection - Protection of your PC from the unexpected.

Experience shows that a significant portion of devices may be damaged (and not covered under warranty) in the first three years. Lenovo's Accidental Damage Protection service covers accidents beyond the system warranty such as drops, spills, bumps and even electrical surges. Make sure your new device has maximum protection, avoid unplanned costs and get peace of mind.

## Base Warranty – Included with the systems you purchase, default 1- or 3-year coverage window.

## Warranty Extensions & Upgrades – Service and protection that's right for your circumstances.

- Pick Up & Return Courier
- Onsite Support
- Technician Installed Customer
- Replaceable Unit Service
- International Warranty Upgrade

Lenovo may not offer the products, services or features discussed in this document in all regions. Lenovo may withdraw an offering at any time. Consult your local representative for information on offerings available in your area. Lenovo reserves the right to change specifications or other product information without notice. Lenovo is not responsible for photographic or typographical errors. Lenovo provides this publication "as is" without warranty of any kind, either express or implied, including the implied warranties of merchantability or fitness for a particular purpose.

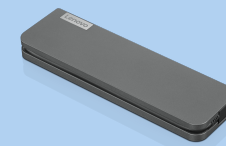
## Recommended Accessories



### ThinkPad Hybrid USB-C with USB-A Dock (American Standard Plug Type B)

40AF0135US

The ThinkPad Hybrid USB-C with USB-A Dock expands the capabilities of most any laptop, new or old, making it perfect for enterprise customers with mixed-PC or shared-desk environments. Featuring enterprise-class manag...



### Lenovo USB-C Mini Dock\_US

40AU0065US

Expand Your Potential with An Universal Mini Dock; Lenovo understands that modern business depends on a wide variety of PC's and even brands to meet their business needs. To make this easier Lenovo USB-C Mini dock is ...

For a full list of accessories and services, please visit:  
<https://smartfind.Lenovo.com>

**Lenovo**

**PSREF**  
Product Specifications  
Reference