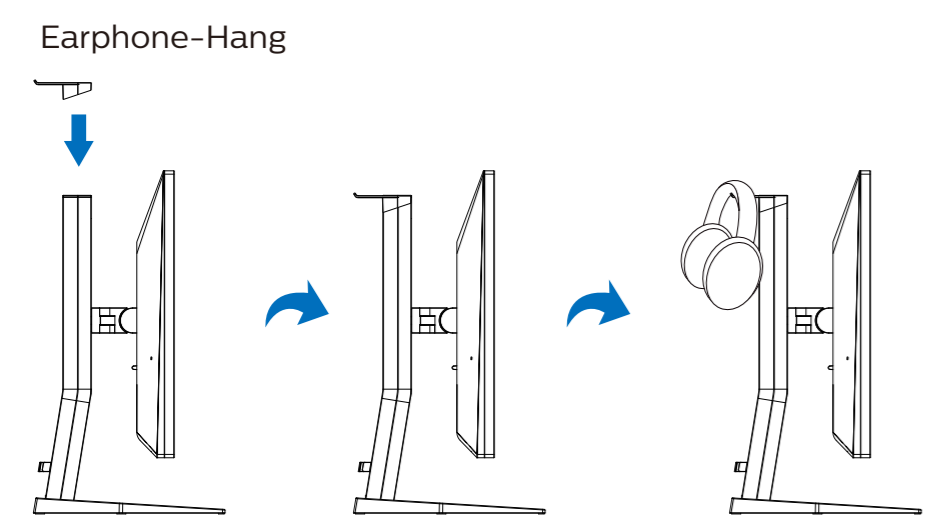
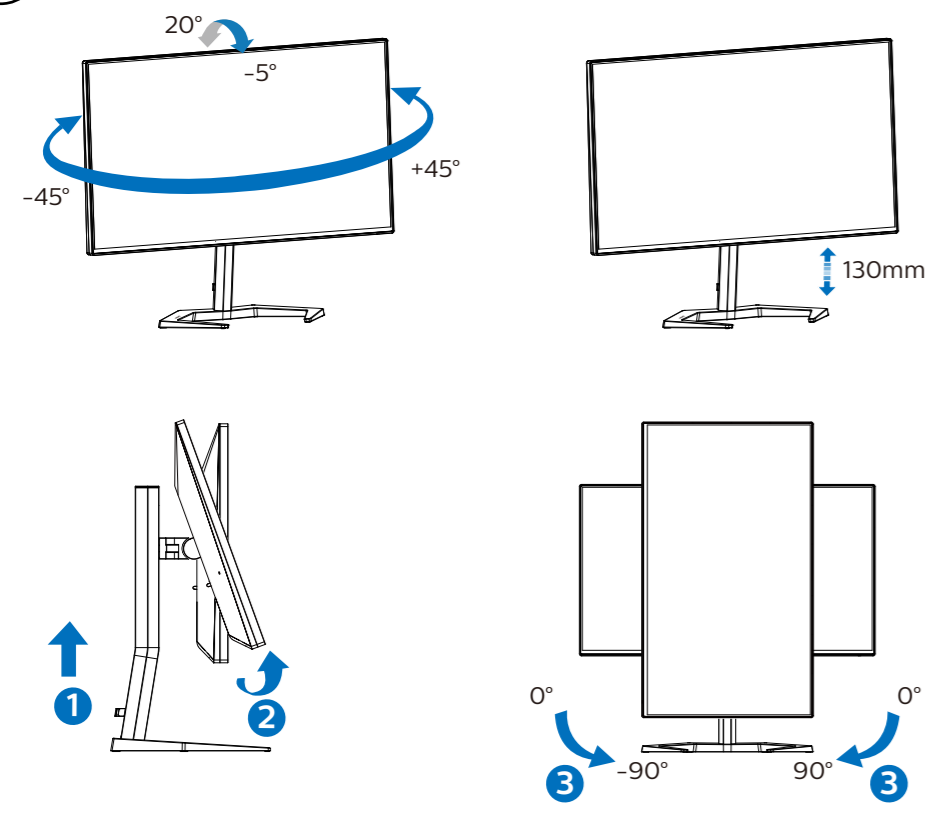


4



Register your product and get support at www.philips.com/support



Version: 27M1F5800Q1T
 2021 © TOP Victory Investments Ltd. All rights reserved.
 This product has been manufactured by and is sold under the responsibility of Top Victory Investments Ltd. and Top Victory Investments Ltd. is the warrantor in relation to this product. Philips and the Philips Shield Emblem are registered trademarks of Koninklijke Philips N.V. and are used under license.

Specifications are subject to change without notice.



The terms HDMI, HDMI High-Definition Multimedia Interface, and the HDMI Logo are trademarks or registered trademarks of HDMI Licensing Administrator, Inc.

www.philips.com



PHILIPS
 Gaming Monitor
 Momentum 5000

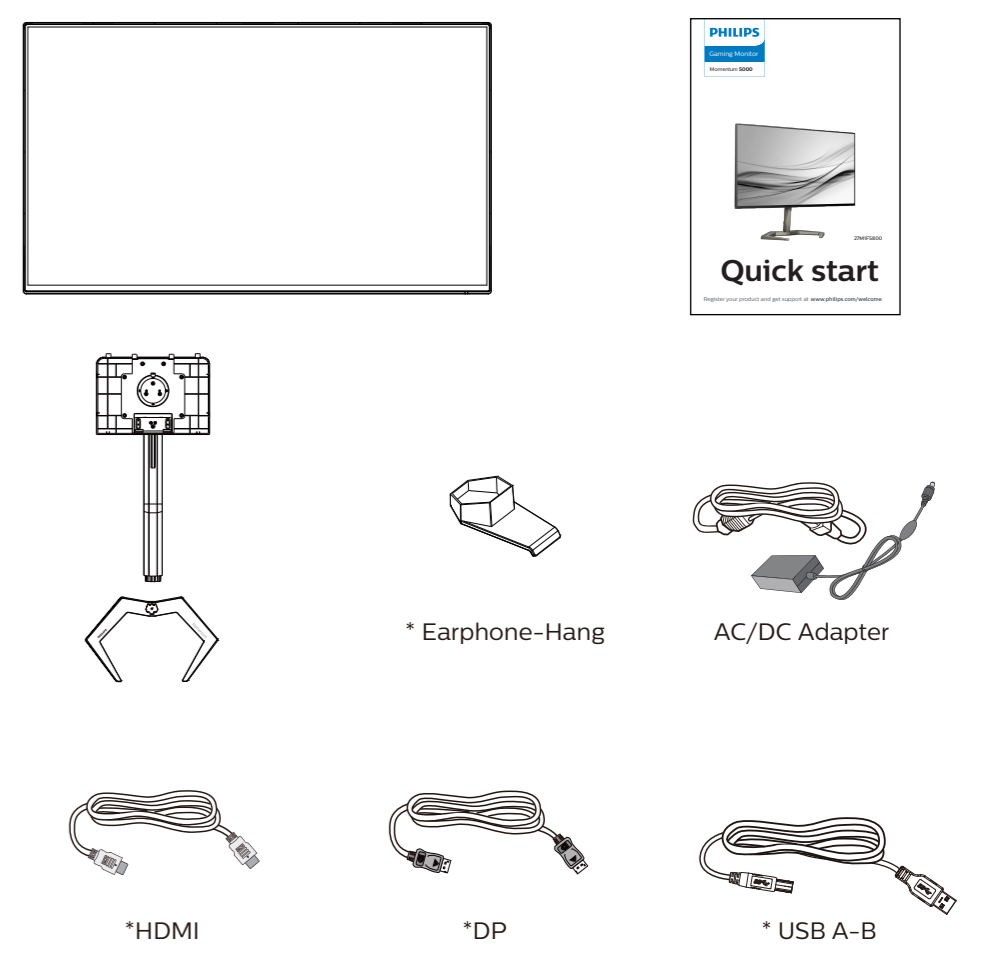


27M1F5800

Quick start

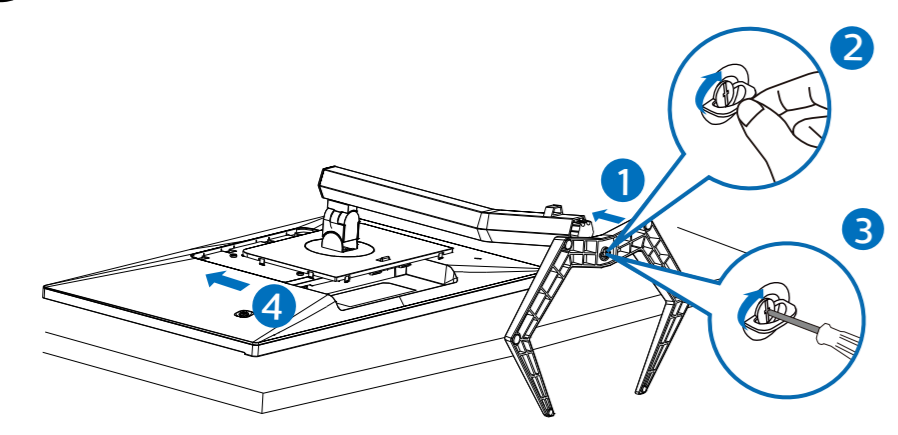
Register your product and get support at www.philips.com/welcome

Contents



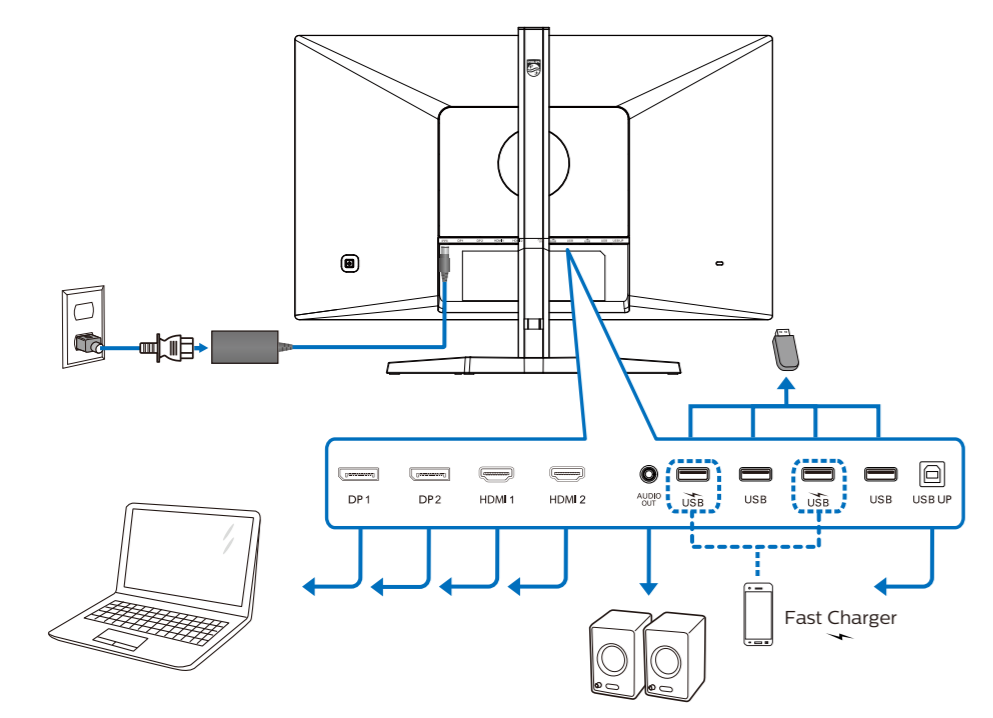
*Different according to region
 Display design may differ from that illustrated

1

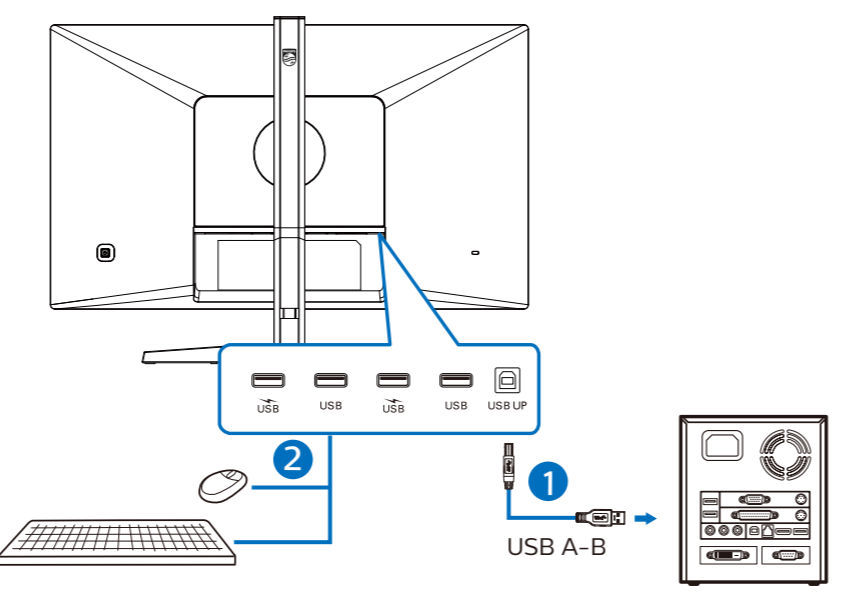


▲ CAUTION: Place the monitor face down on a smooth surface. Pay attention not to scratch or damage the screen.

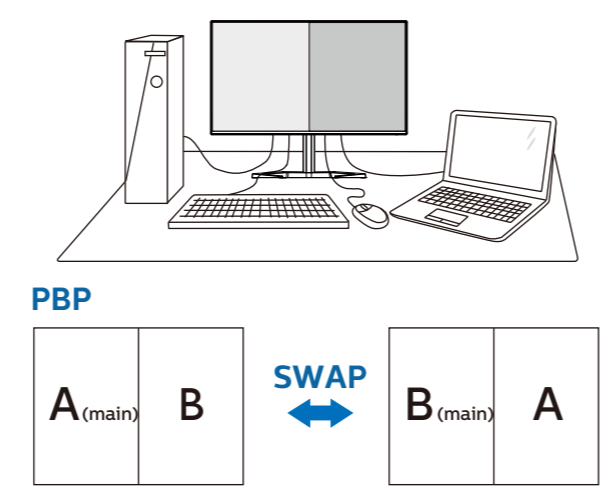
2



USB hub

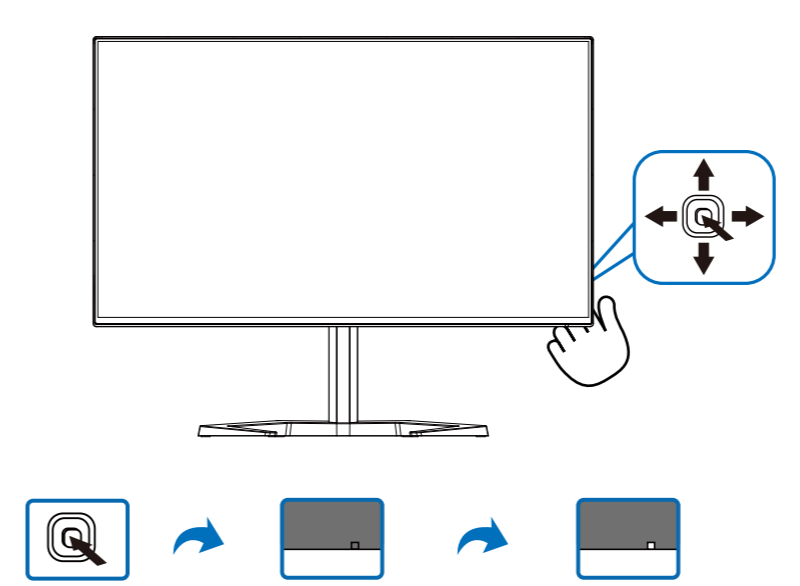


Multiview PBP



MultiView	Inputs	SUB SOURCE POSSIBILITY (x1)			
		HDMI 1	HDMI 2	DisplayPort 1	DisplayPort 2
MAIN SOURCE (x1)	HDMI 1	●	●	●	●
	HDMI 2	●	●	●	●
	DisplayPort 1	●	●	●	●
	DisplayPort 2	●	●	●	●

3



SmartImage™

- Input: 1 HDMI 2.1, 2 HDMI 2.1, DisplayPort1, DisplayPort2
- Racing
- RTS
- Gamer 1
- Gamer 2
- LowBlue Mode
- EasyRead
- SmartUniformity
- Off

SmartImage HDR

- HDR Game
- HDR Movie
- HDR Photo
- Personal
- Off

Game Setting	Adaptive Sync	On
	Crosshair	Off
LowBlue Mode	Low Input Lag	On
	SmartResponse	Off
Input	SmartFrame	Off
HDMI Refresh Rate		
Picture		
PBP		

Game Setting	Adaptive Sync	On
	Crosshair	Off
LowBlue Mode	Low Input Lag	On
	SmartResponse	Off
Input	SmartFrame	Off
HDMI Refresh Rate		
Picture		
PBP		

Game Setting	Adaptive Sync	On
	Crosshair	Off
LowBlue Mode	Low Input Lag	On
	SmartResponse	Off
Input	SmartFrame	Off
HDMI Refresh Rate		
Picture		
PBP		