

#### NOTES:

1. INSTALLATION SHALL COMPLY WITH ALL APPLICABLE NATIONAL, STATE AND LOCAL ELECTRICAL REGULATIONS.
2. REFER TO PRODUCT DOCUMENTATION FOR ADDITIONAL DETAILS PRIOR TO INSTALLATION AND SITE PREPARATION WORK.
3. ALL DIMENSIONS ARE IN MILLIMETERS [INCHES].
- △ 4. FRONT AND REAR ACCESS REQUIRED FOR SERVICE. MINIMUM REQUIRED FRONT/REAR CLEARANCE IS 36.0 [914].
5. NET WEIGHT OF THE EMPTY UNIT IS 77.6 kg [171.1 lb].
6. LOADING CAPACITY:
  - a) STATIC LOAD: 1200kg [2645.5 lb].
  - b) DYNAMIC LOAD: 600kg [1322.7 lb].
7. TOP AND BOTTOM CABLE ENTRY USING APPROPRIATE CUSTOMER PROVIDED SOLUTION.
8. COLOR: BLACK.

THIS DRAWING AND SPECIFICATIONS HEREIN ARE THE PROPERTY OF SCHNEIDER ELECTRIC AND SHALL NOT BE COPIED, REPRODUCED OR USED IN WHOLE OR IN PART, AS THE BASIS FOR THE MANUFACTURE OR SALE OF ITEMS WITHOUT WRITTEN PERMISSION FROM SCHNEIDER ELECTRIC. THIS DRAWING IS BASED UPON LATEST AVAILABLE INFORMATION AND IS SUBJECT TO CHANGE WITHOUT NOTICE.

**Schneider**  
**Electric**

TITLE: Easy RACK 42U  
600mm W x 1200mm D w/o Side panels  
GENERAL ARRANGEMENT

PROJECT: SUBMITTAL DRAWINGS SHEET 1 OF 3

DWG NO: ER6220

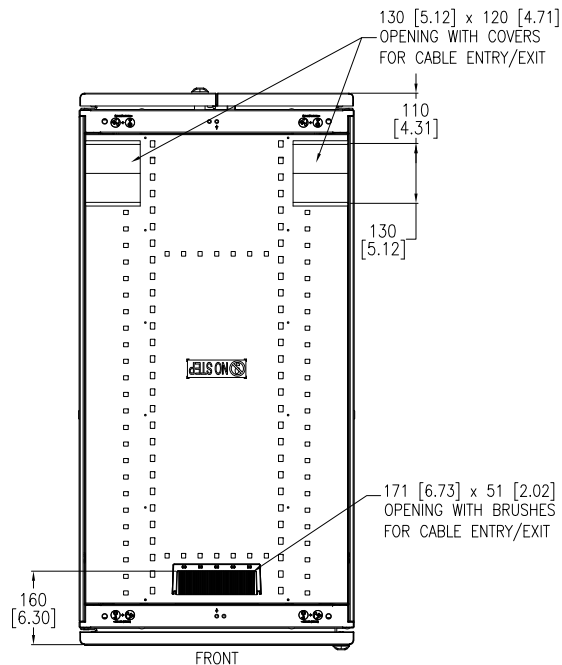
DRAWN BY: JAYAPRAKASH 29-APR-21

ENGINEER: Wenjuan JIA/Xiaoying ZENG 29-APR-21

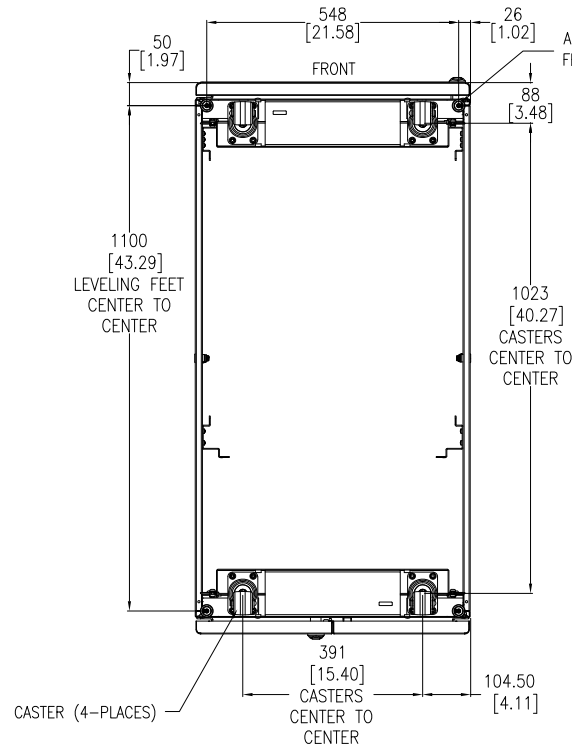
APPROVED BY: Dazhang-Ivan SHI 29-APR-21

REV. 0

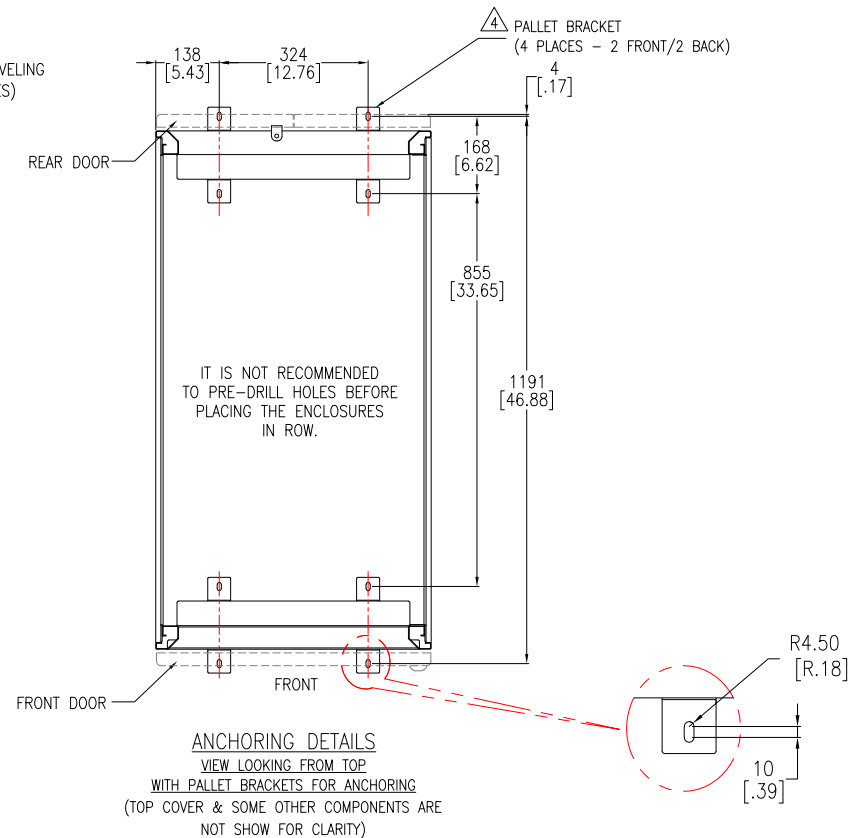
FIRST  
ANGLE  
PROJECTION



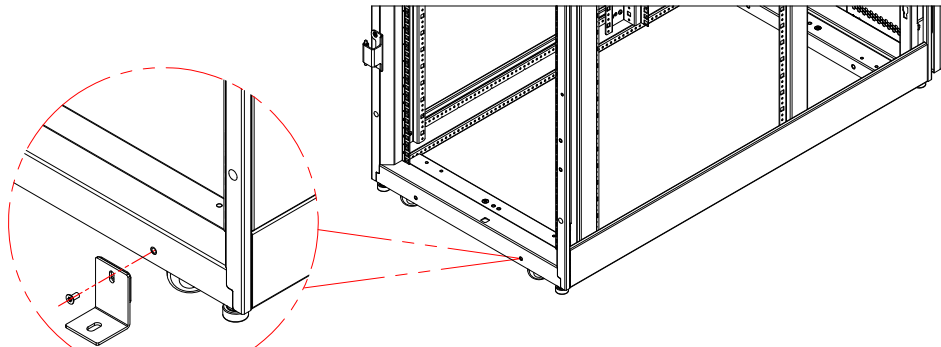
TOP VIEW



BOTTOM VIEW  
(TOP COVER NOT SHOWN FOR CLARITY)



STABILIZING THE ENCLOSURE:  
TO PREVENT THE ENCLOSURE FROM MOVING FROM ITS FINAL LOCATION  
(IF NOT JOINED WITH ANOTHER COMPONENT, USE PALLET/ANCHORING BRACKET)  
ATTACH THE PALLET/ANCHORING BRACKETS TO THE ENCLOSURE AS SHOWN.  
USE CODE COMPLIANT FASTENERS TO SECURE THE ENCLOSURE TO THE FLOOR.



(4 PLACES - 2-FRONT/2-BACK)  
ENLARGED VIEW

ISOMETRIC VIEW  
FRONT DOOR NOT SHOWN FOR CLARITY

- NOTES:
1. INSTALLATION SHALL COMPLY WITH ALL APPLICABLE NATIONAL, STATE AND LOCAL ELECTRICAL REGULATIONS.
  2. REFER TO PRODUCT DOCUMENTATION FOR ADDITIONAL DETAILS PRIOR TO INSTALLATION AND SITE PREPARATION WORK.
  3. ALL DIMENSIONS ARE IN MILLIMETERS [INCHES].
  - △ 4. PALLET/ANCHORING BRACKETS ARE PROVIDED WITH THE ENCLOSURE AND ARE SECURED TO THE ENCLOSURE AND PALLET FOR SHIPMENT. RETAIN THE PALLET BRACKETS FROM SHIPMENT. THESE BRACKETS ARE USED TO ANCHOR THE ENCLOSURE ONCE INSTALLED. PALLET/ANCHORING BRACKETS CAN BE INSTALLED EITHER INSIDE OR OUTSIDE THE EASY RACK WITH TWO AT FRONT AND TWO IN BACK.

THIS DRAWING AND SPECIFICATIONS HEREIN ARE THE PROPERTY OF SCHNEIDER ELECTRIC AND SHALL NOT BE COPIED, REPRODUCED OR USED IN WHOLE OR IN PART, AS THE BASIS FOR THE MANUFACTURE OR SALE OF ITEMS WITHOUT WRITTEN PERMISSION FROM SCHNEIDER ELECTRIC. THIS DRAWING IS BASED UPON LATEST AVAILABLE INFORMATION AND IS SUBJECT TO CHANGE WITHOUT NOTICE.

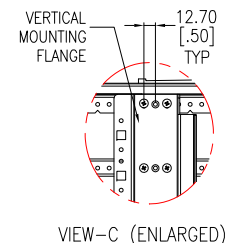
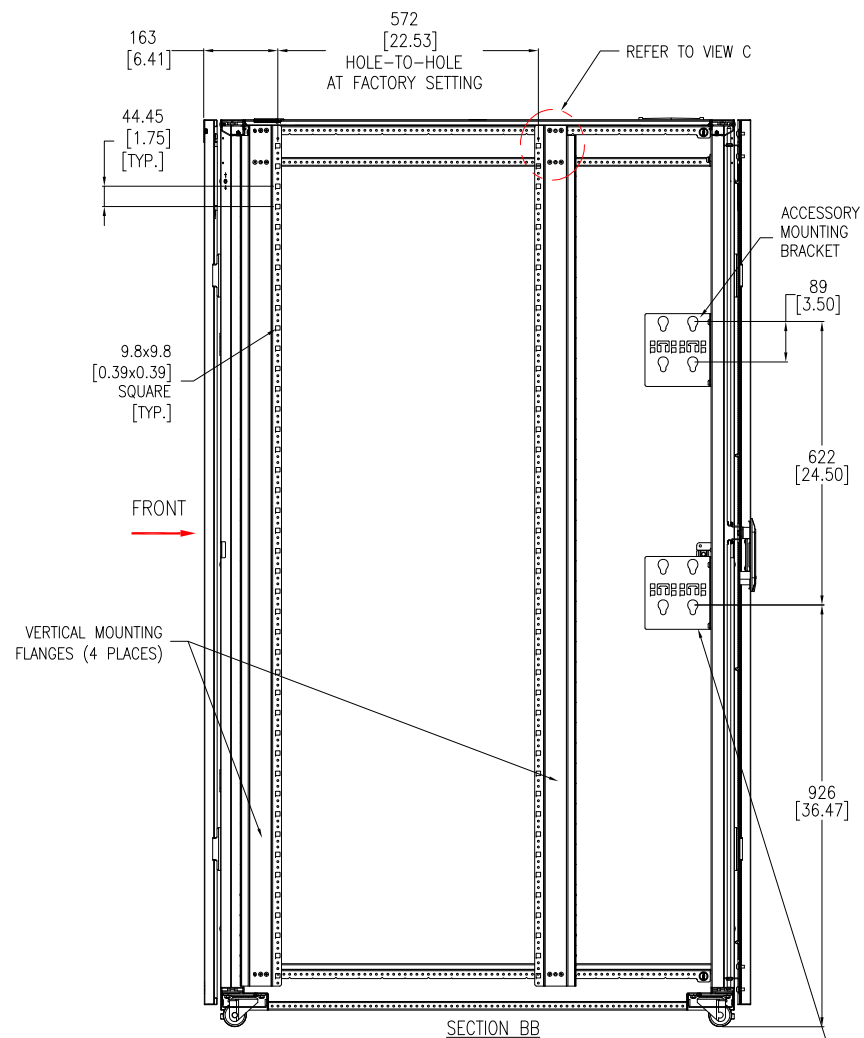
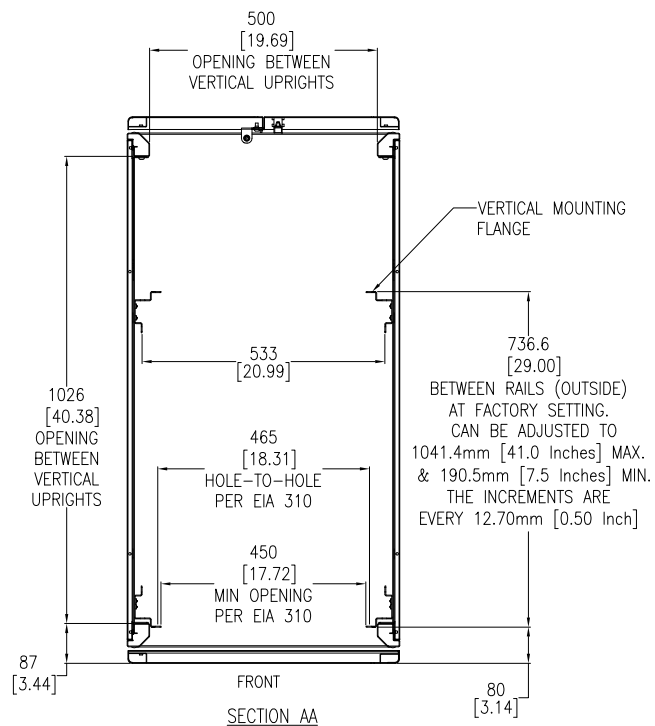
**Schneider**  
**Electric**

TITLE: Easy RACK 42U  
600mm W x 1200mm D w/o Side panels  
TOP/BOTTOM & ANCHORING DETAILS

DWG NO: ER6220

|                                     |           |                              |
|-------------------------------------|-----------|------------------------------|
| DRAWN BY: JAYAPRAKASH               | 29-APR-21 | FIRST<br>ANGLE<br>PROJECTION |
| ENGINEER: Wenjuan JIA/Xiaoying ZENG | 29-APR-21 |                              |
| APPROVED BY: Dazhang-Ivan SHI       | 29-APR-21 |                              |

PROJECT: SUBMITTAL DRAWINGS SHEET 2 OF 3



DEFAULT MOUNTING POSITION OF ACCESSORY MOUNTING BRACKETS SHOWN. THERE ARE 12 POSITIONS ON EACH SIDE OF THE ENCLOSURE FOR INSTALLING ACCESSORY MOUNTING BRACKETS ON ANY OF THE 2 ADJACENT MOUNTING HOLES. HOWEVER IT IS POSSIBLE TO MOUNT A MAXIMUM OF 6 ACCESSORY MOUNTING BRACKETS ON ONE SIDE. 4 ACCESSORY MOUNTING BRACKETS ARE PROVIDED WITH THE ENCLOSURE, 2 ON THE RIGHT SIDE AND 2 ON THE LEFT SIDE OF REAR OF THE UNIT LOCATED AS SHOWN. OTHER BRACKETS ARE AVAILABLE FOR PURCHASE AS SKU ER7PDUBRKT.

- NOTES:
1. INSTALLATION SHALL COMPLY WITH ALL APPLICABLE NATIONAL, STATE AND LOCAL ELECTRICAL REGULATIONS.
  2. REFER TO PRODUCT DOCUMENTATION FOR ADDITIONAL DETAILS PRIOR TO INSTALLATION AND SITE PREPARATION WORK.
  3. ALL DIMENSIONS ARE IN MILLIMETERS [INCHES].

THIS DRAWING AND SPECIFICATIONS HEREIN ARE THE PROPERTY OF SCHNEIDER ELECTRIC AND SHALL NOT BE COPIED, REPRODUCED OR USED IN WHOLE OR IN PART, AS THE BASIS FOR THE MANUFACTURE OR SALE OF ITEMS WITHOUT WRITTEN PERMISSION FROM SCHNEIDER ELECTRIC. THIS DRAWING IS BASED UPON LATEST AVAILABLE INFORMATION AND IS SUBJECT TO CHANGE WITHOUT NOTICE.

**Schneider Electric**

TITLE: Easy RACK 42U  
600mm W x 1200mm D w/o Side panels  
SECTION VIEWS

PROJECT: SUBMITTAL DRAWINGS SHEET 3 OF 3

DWG NO: ER6220  
DRAWN BY: JAYAPRAKASH 29-APR-21  
ENGINEER: Wenjuan JIA/Xiaoying ZENG 29-APR-21  
APPROVED BY: Dazhong-Ivan SHI 29-APR-21

REV. 0  
FIRST ANGLE PROJECTION