

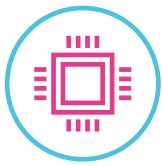
# ideacentre 510

## UPGRADE YOUR FAMILY DESKTOP PC

### A DESKTOP KEEPING YOUR FAMILY CONNECTED

Discover the sleekly designed Lenovo™ IdeaCentre™ 510 desktop, which blends perfectly into your home in sophisticated Warm Silver. Whether you park it on a counter or tuck it away under a desk, it's sure to look great. But don't be fooled by the pretty face—this home PC has the power you need to boost your performance whatever your needs.

### WHY YOU SHOULD BUY THE LENOVO IDEACENTRE 510



#### Power you can feel

The latest generation of Intel® Core™ i7 processing represents an enormous increase in performance from previous generations, offering up to a 40% improvement\* with the 8<sup>th</sup> Generation Intel® Core™ i7 series.



#### Raise your game

The IdeaCentre 510 desktop PC offers a range of powerful graphics options that work in tandem with memory to significantly boost everyday performance. Whether you're playing games or just kicking back and streaming videos, you'll enjoy rich visuals with vibrant colors so intense you might just think they're real! What's more, you can kiss any screen tearing and stuttering goodbye.



Lenovo™



#### Get what you want

Customize your storage so you get just what you want—without paying for features you don't need. Select up to 2 TB SATA HDD to store thousands of videos, photos and files. Or choose a responsive PCIe or SATA SSD (up to 256 GB or 128 GB) for shorter boot up times and faster data transfer speeds.



#### Ports aplenty

Your monitor, keyboard, external hard drive, camera, and favorite speakers don't need to vie for available ports on the IdeaCentre 510. There are multiple ways to connect. Easily upload, transfer, display, and play your media.



\* Software and workloads used in performance tests may have been optimized for performance only on Intel® microprocessors. Performance tests are measured using specific computer systems, components, software, operations and functions. Any change to any of those factors may cause the results to vary.



[WWW.LENOVO.COM](http://WWW.LENOVO.COM)



# ideacentre 510

## SPECIFICATIONS

Lenovo IdeaCentre 510-15ICK\*

### PERFORMANCE

#### Processor

Intel® Core™ i7-9700 Processor  
Intel® Core™ i7-8700 Processor  
Intel® Core™ i5-9400 Processor  
Intel® Core™ i5-8400 Processor  
Intel® Core™ i3-9100 Processor  
Intel® Core™ i3-8100 Processor  
Intel® Pentium® Gold G5420 Processor  
Intel® Celeron® G4930

#### Operating System

Windows 10 Pro  
Windows 10 Home

#### Graphics

Intel® Integrated  
NVIDIA® GeForce® GTX 1650  
NVIDIA® GeForce® GT 730  
AMD Radeon™ RX 560  
AMD Radeon™ RX 550X

#### Memory

2 GB/4 GB/8 GB/12 GB/16 GB DDR4

#### Storage

128 GB/256 GB PCIe SSD  
128 GB SATA SSD  
1 TB/2 TB SATA HDD

#### Power Supply

180W ES PSU  
210W ES PSU

### DESIGN

#### Volume

15 Liter

#### Dimensions (W x D x H)

(mm) : 145 x 285.2 x 366.03  
(inches) : 5.71" x 11.23" x 14.41"

#### Weight

Starting at 12.8 lbs (5.8 kg)

#### Color

Warm Silver



### CONNECTIVITY

#### WLAN

1 x 1 WiFi 802.11 ac

#### Bluetooth®

Bluetooth® 4.0

#### I/O (Input/Output) Ports

1 x USB 3.0 Type-C™  
4 x USB 3.1 Gen1  
4 x USB 2.0  
RJ45 LAN  
Rear Audio Port (Line-Out)  
Front Audio Port (Microphone-in,  
Audio/Microphone Combo)  
VGA  
HDMI™

### PRELOADED SOFTWARE

#### Lenovo Application

- Lenovo Rescue System
- Lenovo Companion
- Lenovo ID
- Lenovo Application Explorer (LAE)
- Lenovo PC Manager

#### OEM Application

- McAfee™ AntiVirus
- Microsoft Office 2016
- Power2Go
- PowerDVD
- Adobe® Reader® 10

\* For Canada/USA.

## LENOVO SERVICES

#### Warranty Upgrades - On-site / In-Home Service

Maximizes PC uptime and productivity by providing convenient, fast repair services in your own home.

#### Accidental Damage Protection

Avoid the hassles of unexpected repair costs. Provides coverage for non-warranted damage incurred under normal operating conditions, such as minor spills, drops or damage to the integrated screen.

#### Warranty Extensions (1-to-3 Years Total Duration)

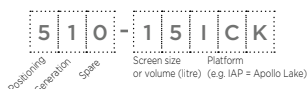
This fixed-term, fixed-cost service helps accurately budget for PC expenses, protect your valuable investment and potentially lower the cost of ownership over time.

## OPTIONS & ACCESSORIES



Lenovo 500  
Wireless Combo  
Keyboard and Mouse

\* Example of  
Lenovo IdeaCentre  
catalogue naming  
convention



#### Intel® platform codes

Apollo Lake: IAP, Broadwell: IBD, Braswell: IBR, Broadwell: IBW, Baytrail: IBY, Cannonlake: ICN, Haswell: IHH, Kabylake: IKB, Skylake: ISK, Skylake H: ISH, Skylake U: ISU, Skylake Y: ISY, Skylake Z: ISZ



WWW.LENOVO.COM

Lenovo reserves the right to alter product offerings and specifications at any time, without notice. Lenovo makes every effort to ensure accuracy of all information but is not liable or responsible for any editorial, photographic or typographic errors. All images are for illustration purposes only. For full Lenovo product, service and warranty specifications visit [www.lenovo.com](http://www.lenovo.com). Lenovo makes no representations or warranties regarding third party products or services. **Trademarks:** The following are trademarks or registered trademarks of Lenovo: Lenovo, the Lenovo logo, ideapad, IdeaCentre, yoga and yoga home. Microsoft, Windows and Vista are registered trademarks of Microsoft Corporation. Ultrabook, Celeron, Celeron Inside, Core Inside, Intel, Intel Logo, Intel Atom, Intel Atom Inside, Intel Core, Intel Inside, Intel Inside Logo, Intel vPro, Itanium, Itanium Inside, Pentium, Pentium Inside, vPro Inside, Xeon, Xeon Phi, and Xeon Inside are trademarks of Intel Corporation in the U.S. and/or other countries. Other company, product and service names may be trademarks or service marks of others. Visit [www.lenovo.com/lenovo/us/en/safecomp/](http://www.lenovo.com/lenovo/us/en/safecomp/) periodically for the latest information on safe and effective computing. ©2018 Lenovo. All rights reserved.



Lenovo™